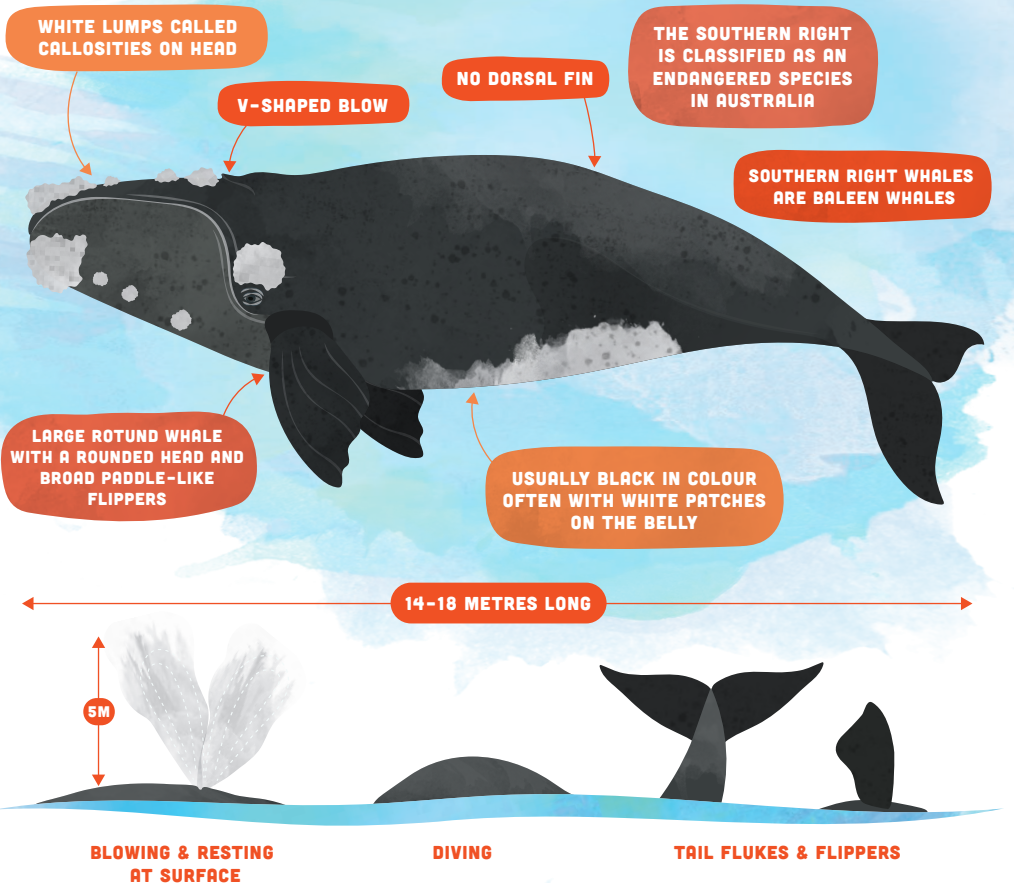
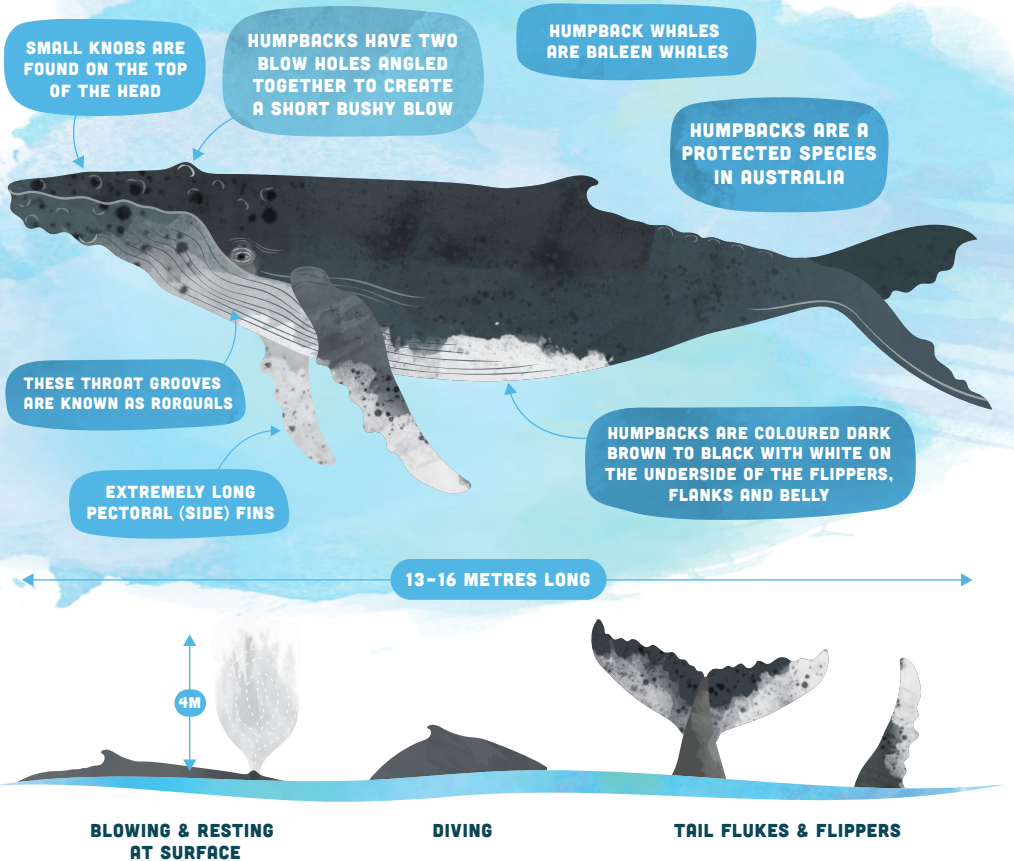


## HOW TO IDENTIFY A...

### SOUTHERN RIGHT WHALE



### HUMPBACK WHALE



## REPORT A WHALE SIGHTING

If you have been lucky enough to spot a whale please let us know by contacting the South Australian Whale Centre:

PHONE (08) 8551 0750

INSTAGRAM @sawhalecentre

FACEBOOK South Australian Whale Centre

EMAIL whalecentre@victor.sa.gov.au

### WHAT TO REPORT

- Date & Time
- Type of whale (if known)
- Number of whales
- Location of whale(s)
- Direction of travel
- Behaviours

Each record we receive provides valuable information about the distribution and occurrence of the numerous cetacean species found in the Encounter Bay waters.

## WHALE WATCHING GUIDELINES

Observing whales and dolphins in their natural habitat is an exhilarating and fulfilling experience. It's important to be mindful that our actions have the potential to disturb these incredible creatures. To ensure the safety of our marine life, there are some important guidelines and laws to follow:

For more information or to report any whale watching infringements, including vessel/aircraft within the whale approach limits, visit: [www.environment.sa.gov.au](http://www.environment.sa.gov.au) or call (08) 8204 1910

Regulations require aircraft (including Remote Piloted Aircraft such as drones\*) to maintain a minimum distance of 300 metres from whales. Helicopters and gyrocopters must be at least 500 metres away.

Vessels in all waters must get no closer than 300 metres to a whale with a calf, or a whale showing signs of disturbance.

Within the Encounter Bay Restricted Area, all vessels must maintain a minimum distance of 300 metres from a whale.

Vessels outside of the Restricted Area must not move a vessel closer than 100 metres from a whale and must not move a vessel closer than 50 metres from any other marine mammal (dolphins, seals etc).

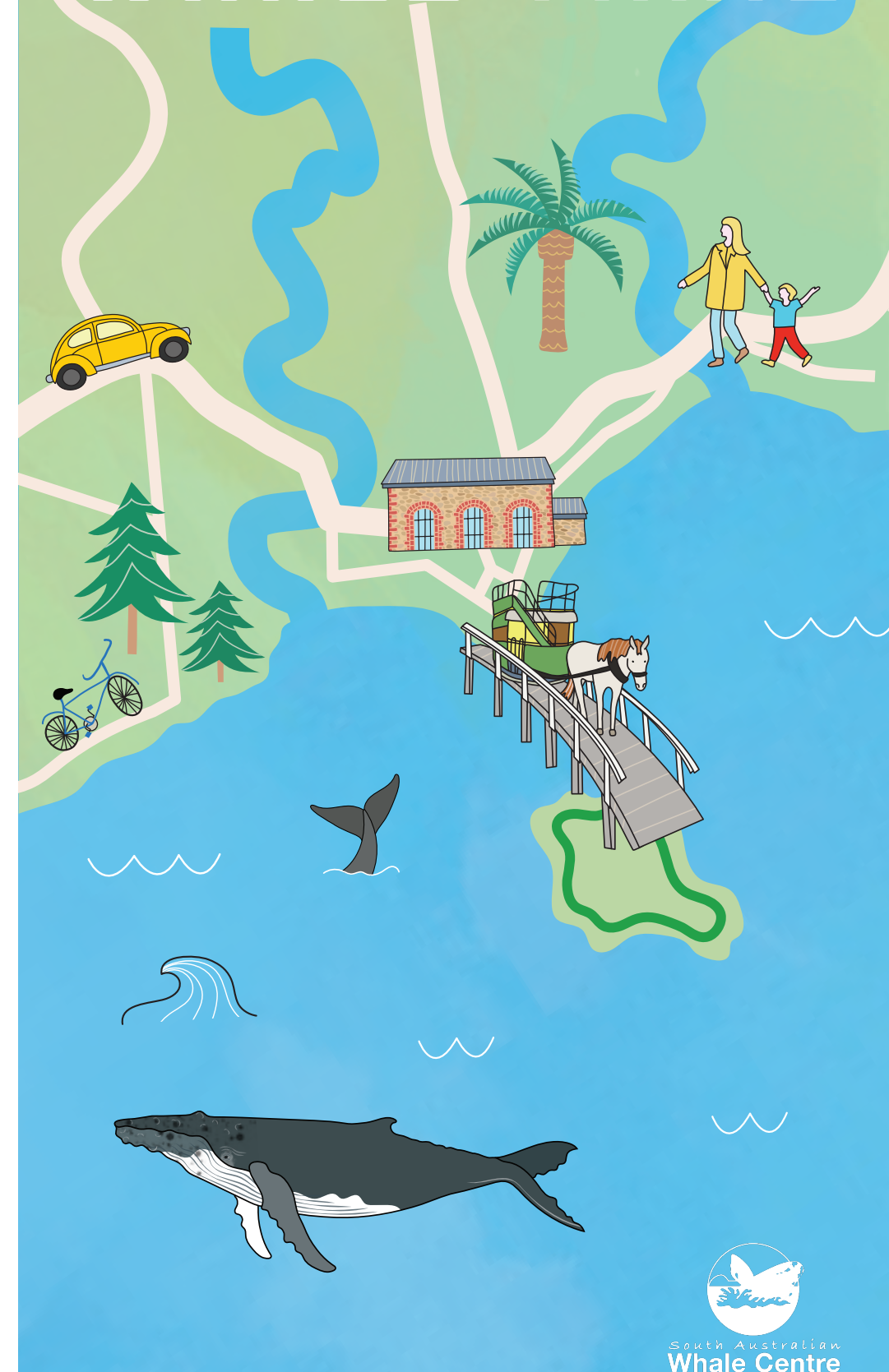
\*It is an offence to fly drones in South Australia's national parks, recreation parks, and marine parks. Scientific groups have a drone scientific research permit.

Enjoy whale watching from a distance

VICTOR HARBOR  
FEEL IT CALLING



## ENCOUNTER BAY WHALE TRAIL



South Australian  
Whale Centre





WHALE WATCHING LOCATION



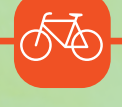
VISITOR CENTRE



PUBLIC TOILETS



WALKING TRAILS



ENCOUNTER BIKEWAY

# VICTOR HARBOR

FEEL IT CALLING

WHALE INFORMATION:  
[WWW.SAWHALECENTRE.COM](http://WWW.SAWHALECENTRE.COM)  
(08) 8551 0750

## ENCOUNTER BAY WHALE TRAIL



← NEWLAND HEAD, WAITPINGA BEACH, PARSONS BEACH

ENCOUNTER  
MARINE PARK  
SANCTUARY ZONE

→ MURRAY MOUTH