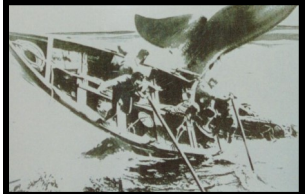
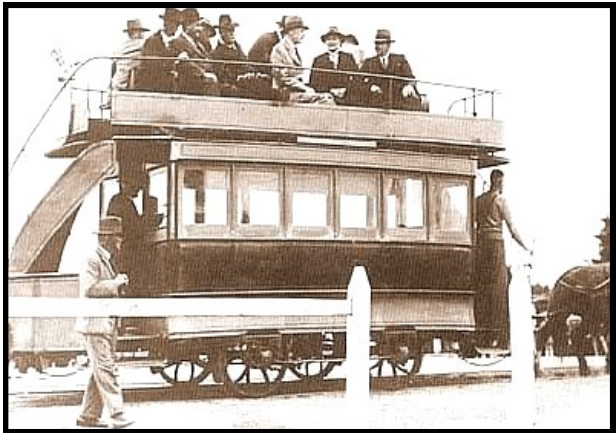
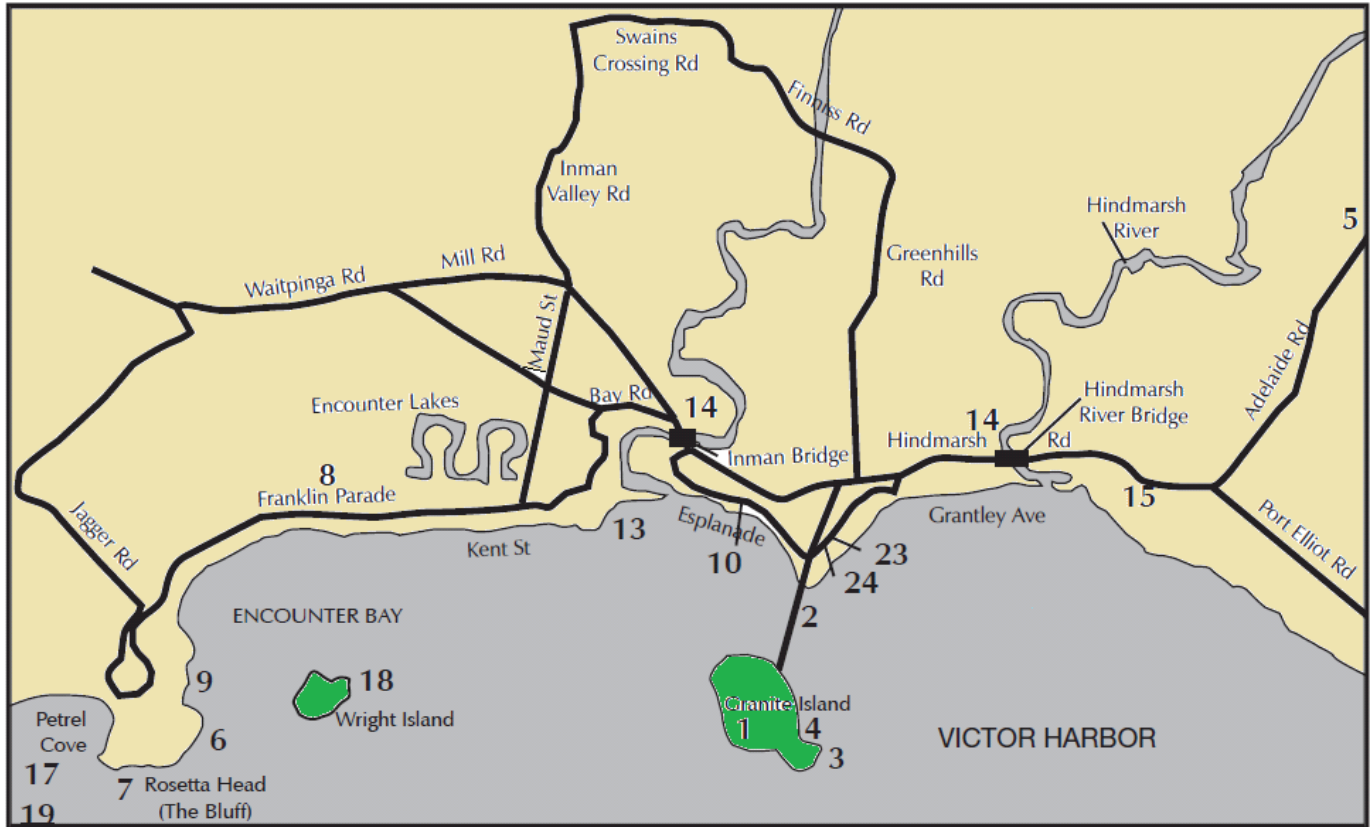


CULTURAL, ENVIRONMENTAL & HISTORICAL INFORMATION on Victor Harbor



visitvictorharbor.com.au
Freecall: 1800 557 094

*Brochure created by the Victor Harbor Visitor Centre 2022.
Contents is correct to the best of our knowledge, but may be subject to change without notice.*

**VICTOR
HARBOR**
FEEL IT CALLING

1. Granite Island — linked to Victor Harbor by a long causeway, natural features include:

Natures Eye, Portrait Rock, The Cradle and Umbrella Rock.

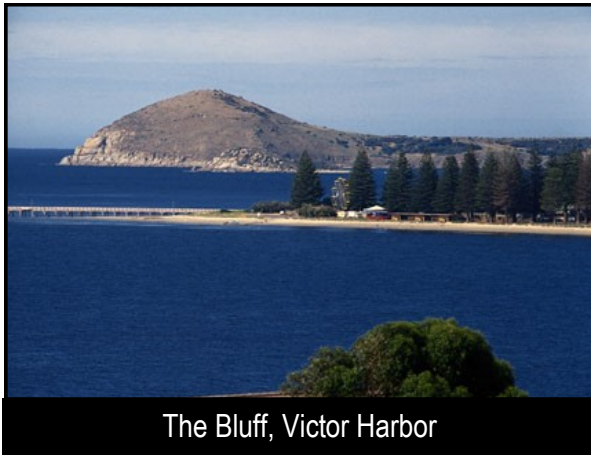
2. Historic Causeway — 630 metres linking Granite Island to the mainland.

Opened in 1864 and extended to the Island in 1878.

3. Breakwater on Granite Island — built 1878 - 1882 and extends for 330 metres, quarter of a million tonnes of Granite used in construction.

4. Screwpile Jetty on Granite Island — built in 1878. Great for fishing.

5. Nangawooka Flora Reserve — across the road from Urimbirra.



6. The Bluff or Rosetta Head — well known landmark, a 100 metre granite rock used as a lookout point for whales, in days gone by and still today.

7. Plaque at summit of the Bluff commemorates the meeting between Matthew Flinders and Nicolas Baudin in 1802.



8. Fountain Inn, Franklin Parade, Yilki — built in 1847. One of the first Inns in South Australia.

9. The Bluff Jetty — popular fishing spot.

10. Newland Memorial Church — built 1927.

11. Congregational Church and St Augustine's Church of England, both built in 1846.

12. Old Tabernacle Cemetery, Tabernacle Road — established 1846.

13. Kent Reserve at mouth of Inman River — quiet reserve, one of the last camping grounds of the Ramindjeri Aboriginal tribe.

14. Hindmarsh and Inman Rivers — walking trails and Old Port Victor Historic Town Walk.

15. Scenic lookout from Kleinig's Hill.

16. Surfing Beaches at Waitpinga, Parsons, Chiton and Boomer.

17. Petrel Cove and Kings Beach — coastal cliff views.

18. Wright Island — bird rookery.

19. West Island — granite to face Parliament House was quarried from here (now an aquatic conservation reserve).

20. Electric Barbeques — Barker Reserve (opposite Council office), Soldiers Memorial Gardens (opposite Hotel Victor), Kent Reserve (Kent Drive).

21. Foreshore lawns, gardens and playgrounds.

22. Art Galleries — Ocean Street Gallery and Southern Arts Society Gallery in Railway Terrace, Telegraph Station Art Gallery.

23. Old Customs and Station Masters House, built 1866, now the National Trust Museum, Flinders Parade.

24. National Trust Museum, 2 Flinders Parade, a living display of the History of the Encounter Coast.

25. Hindmarsh Falls off Victor Harbor - Myponga Road.

